



THE DISTRICT

at the Guadalupe River Walk

*A vision for the Guadalupe
River Park & Gardens in the Diridon
Station Area*

This is a vision . . . from a cadre of San Jose community builders and Downtown advocates to show how true urban densities could transform a section of our Guadalupe River Park & Gardens into a regional destination **teaming** with new life, recreational activities, public plazas, retail shopping, restaurants, hotels, office buildings, and residential towers. The story brings awareness and support of the Guadalupe River Park Conservancy's mission to *"see an active, iconic, world-class central park with gardens, trails where natives and visitors alike can enjoy open spaces and natural habitats . . . hubs for social **interaction**, retreats from urban life . . . a living centerpiece for a thriving San Jose."* Imagine the possibilities if we can leverage densities along the perimeter of the park to fund the revitalization of our green space, a true public-private partnership.

SWENSON



CMG



THE DISTRICT @ The Guadalupe River Walk

San Jose is in the midst of its urban renaissance — a transition from suburban community to urban oasis. With Diridon Station poised to be the largest transportation hub in the Western United States, and with Google's plans to bring up to 20,000 employees to the immediate vicinity, the Guadalupe River Park & Gardens is a strategic component of this new paradigm.

The District (Diridon Station RICT) is the reinvention of the city owned park land bounded by West Santa Clara Street, Autumn Parkway, West Julian Street and Highway 87.

The District creates an activated central park for all to enjoy.

*The Guadalupe River Park in the
Diridon Station Area*



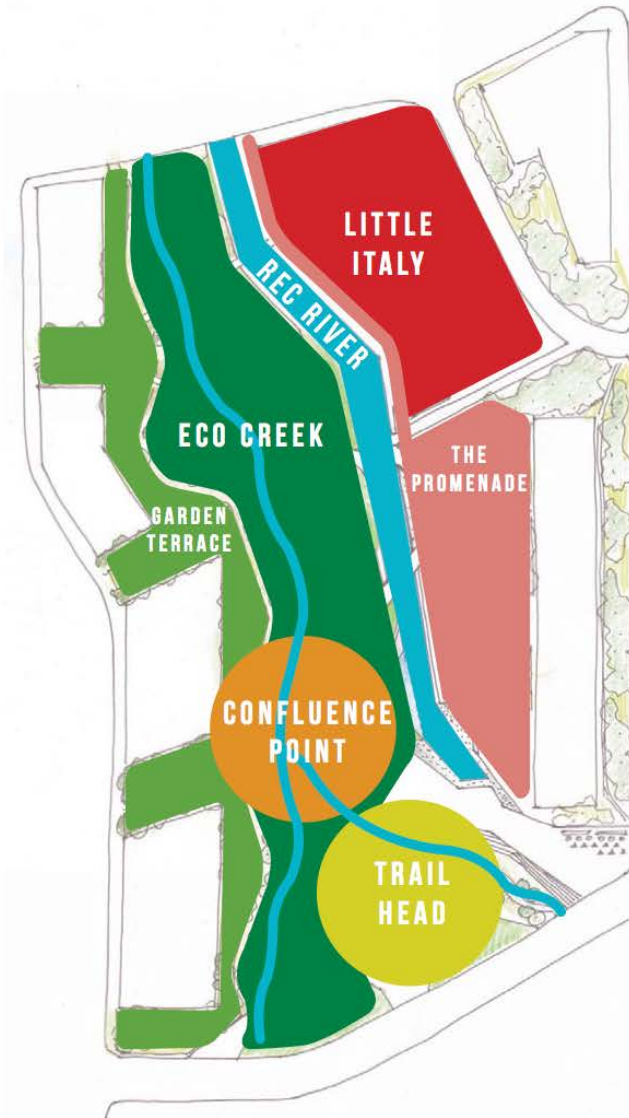


THE PARK REIMAGINED

We Partnered with CMG Landscape Architecture to assess the current park landscape. Their goal is to create cohesive and focused environment that maintains the natural aspect of the existing park while providing urban **amenities**.

The built environment from Studio Current and Mayberry Workshop takes into careful consideration the importance of maintaining the natural environment as well as creating accessible, usable and inspiring places to gather.

We have maintained the current parkland **acrage** by building rooftop parks on the podium base throughout.



REC RIVER

EXTREME WATER PLAY

URBAN KAYAKING



URBAN STAGE



INTERACTIVE ART



URBAN SURFING



ECOLOGY LABS



HABITAT



NATIVE LANDSCAPES



HIKING



CONFLUENCE POINT

ECOLOGICAL AUDITORIUM

CANDPY WALK



CREEK SWINGS



AMPHITHEATER



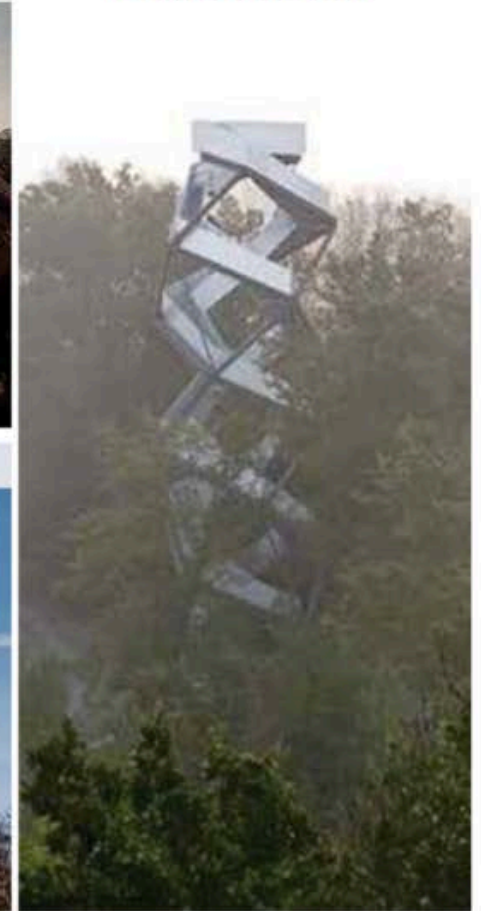
TRAIL-HEAD

GATEWAY TO THE GUADALUPE

LOOKOUT-CHART YOUR TRAIL



OBSERVATION TOWER



LOOKOUT-CHART YOUR TRAIL



THE BRIDGE

CONNECTING PEOPLE + PLACES

ICONIC



SCULPTURAL



SOCIAL



DYNAMIC



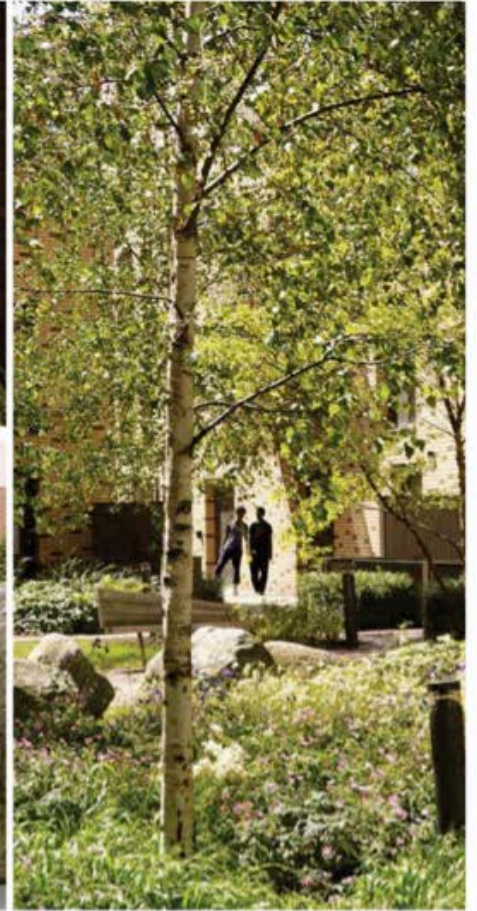
GARDEN TERRACE

OVERLOOK THE GUADALUPE FROM A GARDEN STROLL

COURTYARDS



INTIMATE



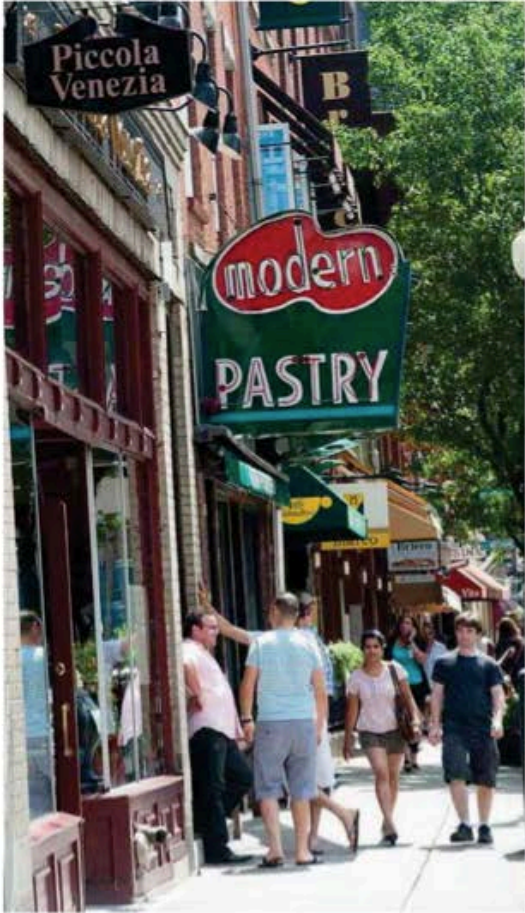
GARDENS



LITTLE ITALY

A SMALL VILLAGE IN A BIG CITY

UNIQUE RETAIL + SHOPPING



SMALL SCALE NEIGHBORHOOD



EVENTS & CELEBRATIONS



THE PROMENADE

SHOP DINE STROLL ON THE WATER

WATERFRONT DINING



CULTURE



RETAIL - SHOPPING

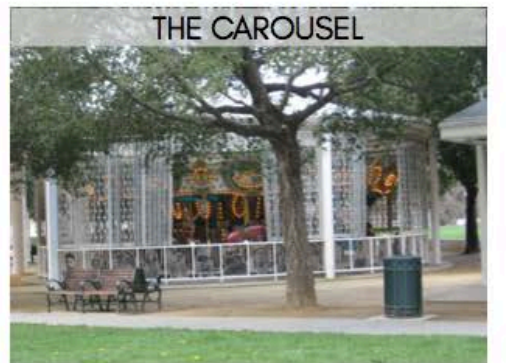
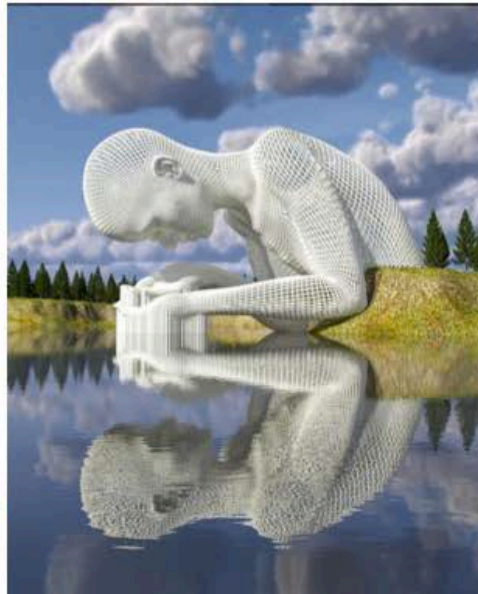


LEISURE

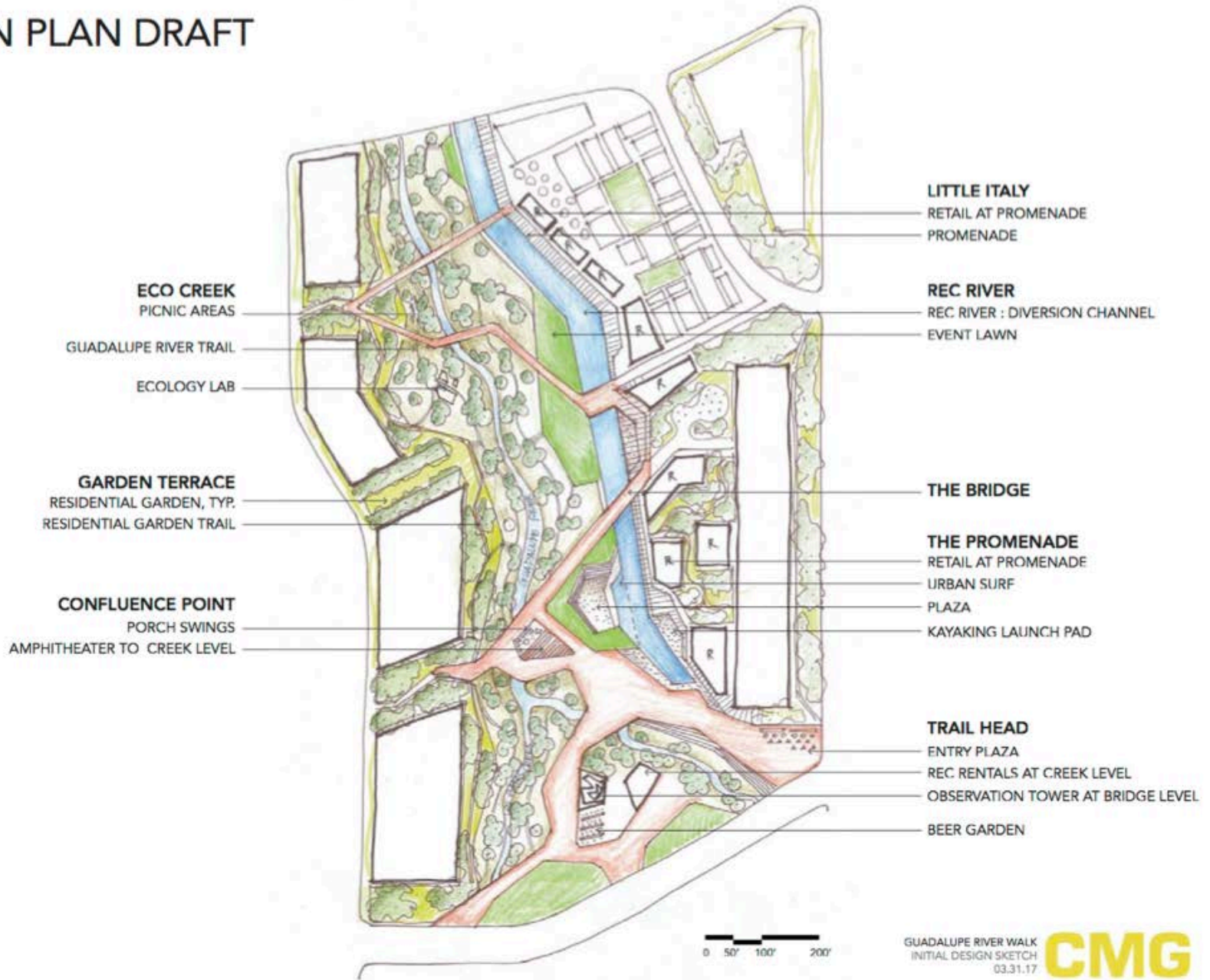


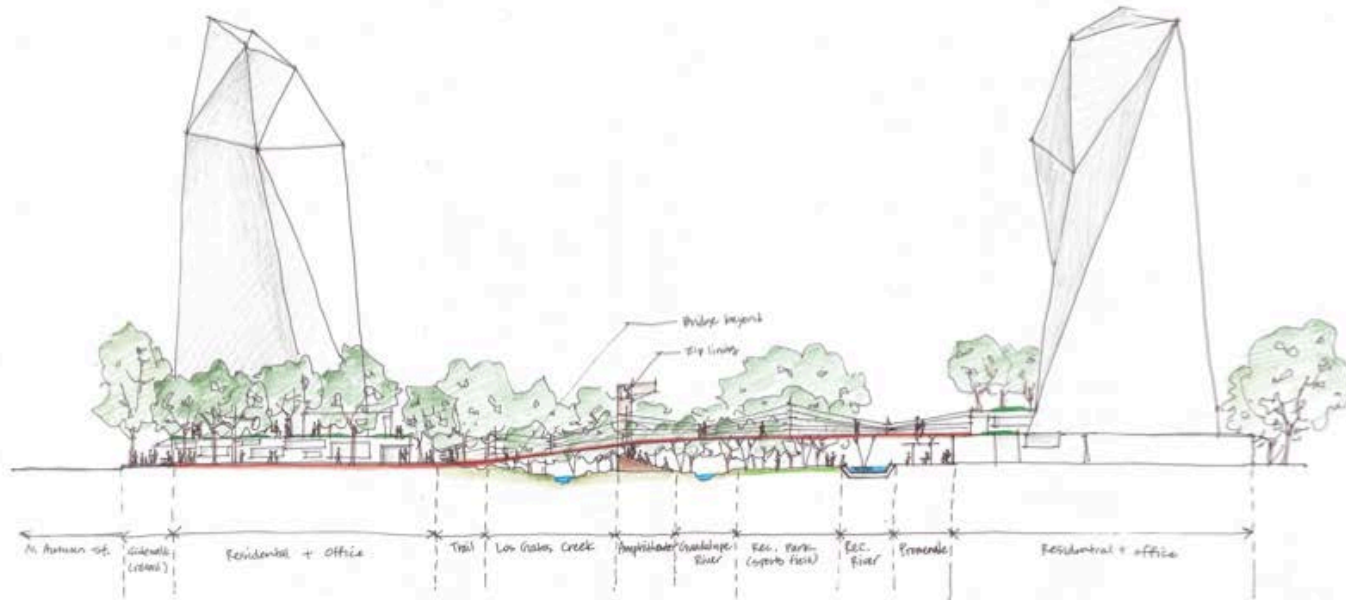
BIG ART

EXISTING INSTALLATIONS



VISION PLAN DRAFT





SECTION A 0 50 100'



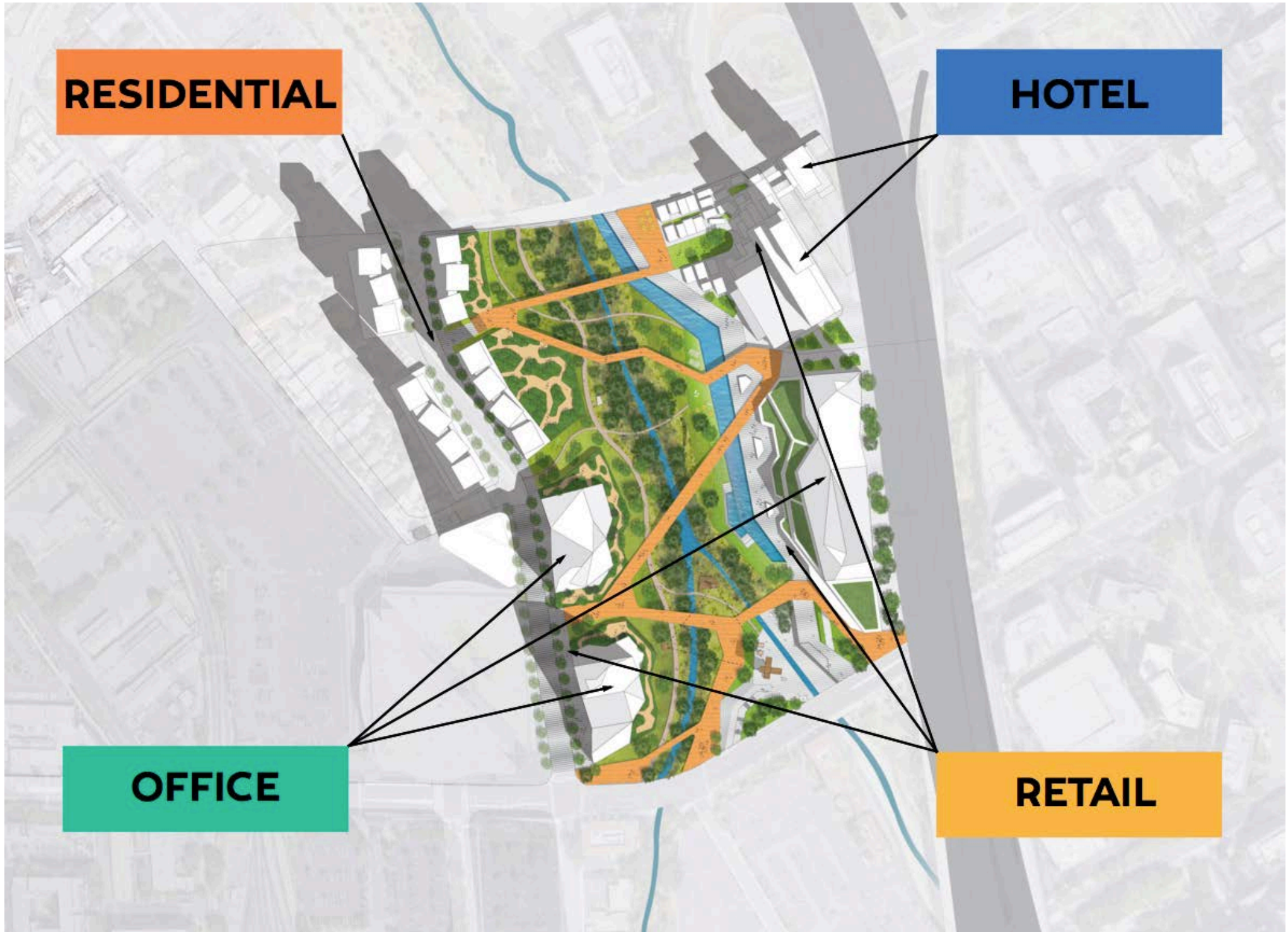
SECTION B 0 50 100'

RESIDENTIAL

HOTEL

OFFICE

RETAIL



OFFICE

- 40,000 SQUARE FOOT FLOOR PLATES (AVG)
- FLOOR TO CEILING WINDOW SYSTEM
- PODIUM ROOFTOP GARDENS
- 3.8 MILLION SQUARE FEET

RESIDENTIAL

- MULTI-TOWER COMMUNITY
- AMENITY DECKS WITH VIEWS OF THE PARK
- 2,400 UNITS
- 2 MILION SQUARE FEET

RETAIL

- ACTIVE PROMENADE RETAIL ENVIRONMENT
- 5 STORY TERRACED SHOPPING CENTER
- 420,000 SQUARE FEET OF SHOPPING

HOTEL

- DUAL BRAND HOTEL SITE
- EVENT AND MEETING SPACE WITH VIEWS
- 1100 KEYS
- 590,000 SQUARE FEET

PUBLIC

- ENJOY GREAT EATS & LIVE PERFORMANCES IN THE NEW LITTLE ITALY CENTRAL PLAZA
- GREAT MEETING POINT AT SANTA CLARA STREET BART STATION
- ZIPLINE FROM SANTA CLARA STREET TO LITTLE ITALY
- RENT A KAYAK FOR THE DAY IN OUR SJ RAPIDS URBAN KAYAK EXPERIENCE
- RELAX OR STROLL THROUGH OUR MEANDERING BRIDGES AND TRAIL UPGRADES
- LEARN ABOUT THE NATURAL ENVIRONMENT THROUGH GRPC'S VISITOR CENTER TOURS
- GATHER FRIENDS FOR VOLLEYBALL OR BOCCE, OR A GAME OF FRISBEE ON THE GREEN
- ENJOY TIME WITH FRIENDS AND FAMILY AT ONE OF THE 50 RESTURANTS AND SHOPS AT THE PROMENADE















