

# TRANSCEND THE LIMITS OF HUMAN MOBILITY





SPARTAN  
SUPERWAY

# AUTOMATED TRANSIT NETWORKS

## INTRODUCTION

Current transportation modes, especially the automobile, are rapidly becoming unsustainable. Increases in population result in traffic and unacceptable commute times which magnify the negative environmental effects caused by the inefficient combustion of fossil fuels.

Due to climate change and finite oil supply, the current paradigm is not sustainable. Incremental changes will not get us where we need to go. A drastic change is needed in how we approach transportation.

An enticing alternative must be available to get people out of their oil-consuming, combustion engine vehicles, and we envision a better future.

## THE SUPERWAY PROJECT CONCEPT

### 1 CONTROL SYSTEM

wirelessly directs cars equipped with on-board sensors for object detection, acceleration, velocity, and position

### 2 GUIDE-WAY & BOGIE SWITCH

switching is implemented in the drive train of individual pod cars to facilitate frequent directional changes

### 3 THE CABIN

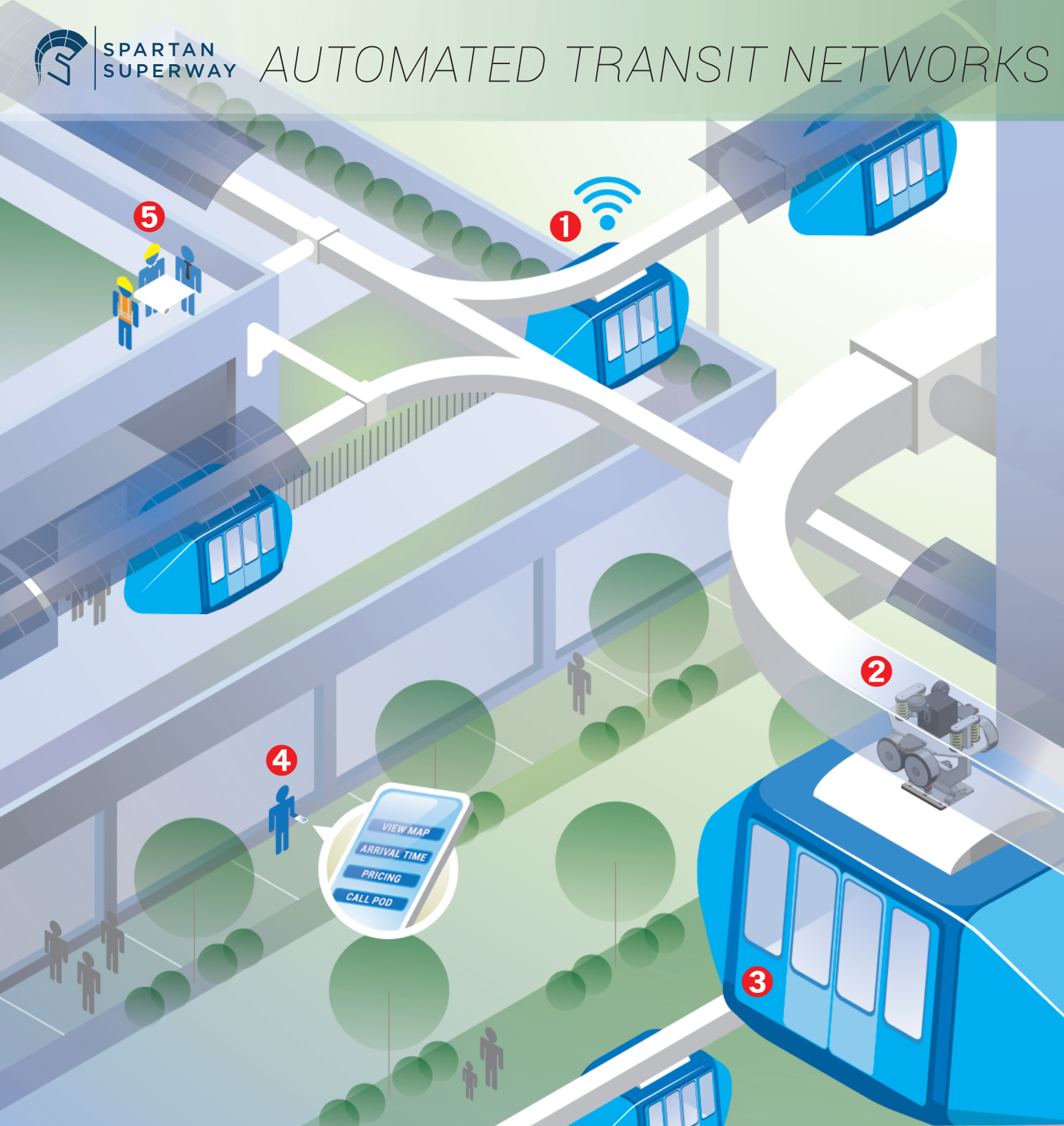
suspended from the guide-way, the cabin can travel over 50 mph

### 4 FARE-BOX MOBILE PHONE AP

enables scheduling, ticketing and navigation through your own phone

### 5 COLLABORATION

private and public sectors have vested interest and economic analyses are underway to assess revenue potential



# SPARTAN SUPERWAY DESIGN TEAM



We are a multi-disciplinary team of student engineers, designers, and urban planners at San José State University re-imagining the way you get to work! Our big idea would revolutionize transportation and we want to share it with the world, but we need your donations to make it a reality!

Please scan the QR code or visit us online:  
[www.gofundme.com/spartansuperway](http://www.gofundme.com/spartansuperway) & [www.superway.us](http://www.superway.us)



*DONATE!*



**SPARTAN  
SUPERWAY**

Contact us:  
[info@superway.us](mailto:info@superway.us)  
408.320.STAR

## OUR GENEROUS SPONSORS

**Genentech**



**ENCITRA**



**ELT GRAPHICS**  
THE ART OF ENGINEERING

**Microsoft**

**SWENSON SOLAR**

**COAST ALUMINUM  
and ARCHITECTURAL**

**atra** Advanced  
Transit Association

**BARRY SWENSON  
BUILDER**

**BIG CREEK**  
LUMBER & BUILDING MATERIALS

**PDM**  
Steel Service Centers, Inc.

**niST**